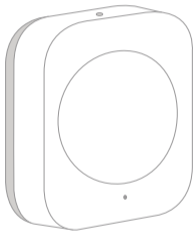


Aqara



Wireless Mini Switch

# 무선 미니 스위치 퀵 설치 가이드

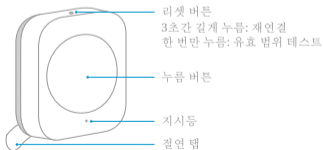
## 제품 소개

Aqara 무선 미니 스위치는 소형 디자인 및 저에너지 소비의 원격 제어 스위치입니다. 어느 곳에도 놓거나 붙일 수 있습니다. 한 번 누름, 두 번 연속 누름 또는 길게 누름으로 스마트 라이트 및 스마트 플러그 같은 여러 스마트 액세서리를 제어합니다.

\* 허브 필요.

\* Aqara 허브는 이 제품을 HomeKit 기술로 작동할 수 있게 하는데 필요합니다. 세부사항에 대해서는 [www.aqara.com](http://www.aqara.com) 사이트를 참조해 주십시오.

\* 이 제품은 실내용입니다.



## 빠른 설정

1. 허브 퀵 설치 가이드에 따라 허브를 앱에 추가해 주십시오.
2. 사용 전에 배터리 절연 탭을 제거해 주십시오.
3. 앱을 열고 “Home”(홈)을 탭한 다음에 오른쪽 상단 구석의 “+”를 탭하여 “Add Device (Accessory)” (장치 추가(액세서리)) 페이지로 들어갑니다. “Wireless Mini Switch”(무선 미니 스위치)를 선택하고, 지시에 따라 추가합니다.

\* 연결이 되지 않는 경우, 액세서리를 허브에 더 가까이 이동시켜서 다시 시도해 주십시오.

## 설치

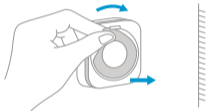
유효 범위 테스트: 원하는 위치에서 액세서리의 리셋 버튼을 한 차례 누릅니다. 허브에 음성 프롬프트가 나타나는 경우, 액세서리가 허브와 유효하게 통신할 수 있다는 것을 나타냅니다.

\* 신호 강도를 극대화하려면 금속 표면에 놓지 마십시오.

옵션 1: 원하는 위치에 직접 놓습니다.



옵션 2: 보호 필름을 제거하고 원하는 위치에 붙입니다.



\* 표면을 깨끗하고 건조된 상태로 유지합니다.

액세서리 식별: 앱을 열고 “Device List (Accessories)”(장치 목록(액세서리)) 페이지로 갑니다. 액세서리에서 리셋 버튼을 한 차례 누릅니다. 허브에 음성 프롬프트가 나타나고 앱 블링크에 관련 액세서리 아이콘이 나타나는 경우, 해당 액세서리가 식별되었다는 것을 나타냅니다.

\* Aqara 홈 앱과 Aqara 앱만이 이 기능을 지원합니다.

## 사양

모델: WXKG11LM

제원: 45 × 45 × 12mm (1.77 × 1.77 × 0.47인치)

무선 프로토콜: Zigbee

배터리: CR2032

작동 온도: -10°~+50°C

작동 습도: 0 ~ 95% RH, 응축 없음

사이트: [www.aqara.com/support](http://www.aqara.com/support)

A/S 메일: [support@aqara.com](mailto:support@aqara.com)

제조업체: 심천루미온과학기술유한공사

주소: 광둥성 심천시 남산구 류선대도 당령로 1번지

금기지곡빌딩 8층

FCC ID: 2AKIT-WXKG11LM

Federal Communications Commission (FCC) compliance statement

1. This device complies with Part 15 of the FCC Rules. Operation is subject to the following two conditions:

(1) This device may not cause harmful interference.

(2) This device must accept any interference received, including interference that may cause undesired operation.

2. Changes or modifications not expressly approved by the party responsible for compliance could void the user's authority to operate the equipment.

NOTE: This equipment has been tested and found to comply with the limits for a Class B digital device, pursuant to Part 15 of the FCC Rules. These limits are designed to provide reasonable protection against harmful interference in a residential installation.

This equipment generates uses and can radiate radio frequency energy and, if not installed and used in accordance with the instructions, may cause harmful interference to radio communications.

However, there is no guarantee that interference will not occur in a particular installation. If this equipment does cause harmful interference to radio or television reception, which can be determined by turning the equipment off and on, the user is encouraged to try to correct the interference by one or more of the following measures:

- Reorient or relocate the receiving antenna.
- Increase the separation between the equipment and receiver.
- Connect the equipment into an outlet on a circuit different from that to which the receiver is connected.
- Consult the dealer or an experienced radio/TV technician for help.

FCC Radiation Exposure Statement

This equipment complies with FCC radiation exposure limits set forth for an uncontrolled environment. This equipment should be installed and operated with minimum distance 20cm between the radiator & your body.

IC: 22635-WXKG11LM

#### IC NOTICE TO CANADIAN USERS

This device complies with Industry Canada license - exempt RSS standard(s). Operation is subject to the following two conditions: (1) This device may not cause interference, and (2) This device must accept any interference, including interference that may cause undesired operation of the device. This device complies with RSS - 247 of Industry Canada. Operation is subject to the condition that this device does not cause harmful interference. This Class B digital apparatus complies with Canadian ICES - 003 (Cet appareil numérique de la Classe B conforme à la norme NMB - 003 du Canada).

This equipment complies with IC radiation exposure limits set forth for an uncontrolled environment. This equipment should be installed and operated with minimum distance of 20 cm between the radiator and your body. This transmitter must not be co-located or operating in conjunction with any other antenna or transmitter.

Le présent appareil est conforme aux CNR d'Industrie Canada applicables aux appareils radio exempts de licence. L'exploitation est autorisée aux deux conditions suivantes: (1) l'appareil ne doit pas produire de brouillage, et (2) l'utilisateur de l'appareil doit accepter tout brouillage radioélectrique subi, même si le brouillage est susceptible d'en compromettre le fonctionnement.

Cet équipement est conforme aux limites IC d'exposition aux radiations définies pour un environnement non contrôlé. Cet équipement doit être installé et utilisé avec une distance minimale de 20 cm entre le radiateur et votre corps. Cet émetteur ne doit pas être situé ou opérant en conjonction avec une autre antenne ou émetteur.



Hereby, LUMI UNITED TECHNOLOGY CO., LTD declares that the Radio Equipment type is in compliance with RED 2014/53/EU. The full text of the EU Declaration of Conformity is available at the following internet address: [www.lumiunited.com/DoC](http://www.lumiunited.com/DoC). This product can be used across EU member states.



Complies with the European Union's Restriction of Hazardous Substances Directive which protects the environment by restricting specific hazardous materials and products.



**CAUTION: RISK OF EXPLOSION IF BATTERY IS REPLACED BY AN INCORRECT TYPE.**  
DISPOSE OF USED BATTERIES ACCORDING TO THE INSTRUCTIONS.

**RECYCLING.** This product bears the selective sorting symbol for Waste electrical and electronic equipment (WEEE). This means that this product must be handled pursuant to European directive 2012/19/EU in order to be recycled or dismantled to minimize its impact on the environment.





Symbol for “ENVIRONMENT PROTECTION – Waste electrical products should not be disposed of with household waste. Please recycle where facilities exist. Check with your local Authority or retailer for recycling advice”.



Symbol on the product or on its packaging indicates that this product may not be treated as household waste. Instead it shall be handed over to the applicable collection point for the recycling of electrical and electronic equipment.

### 产品中有害物质的名称及含量

部件名称	有害物质					
	铅 (Pb)	汞 (Hg)	镉 (Cd)	六价铬 (Cr (VI))	多溴联苯 (PBB)	多溴二苯醚 (PBDE)
白色塑料壳	○	○	○	○	○	○
硬塑料	○	○	○	○	○	○
金属	○	○	○	○	○	○
电阻	○	○	○	○	○	○

本表格依据SJ/T 11364的规定编制。  
 ○: 表示该有害物质在该部件所有均质材料中的含量均在GB/T 26572规定的限量要求以下。  
 X: 表示该有害物质至少在该部件的某一均质材料中的含量超出GB/T 26572规定的限量要求。



## 安全注意事項

- 1、本產品非玩具，請讓兒童遠離本產品。
- 2、本產品仅限室內使用，請勿在潮濕環境或室外使用。
- 3、注意防潮，請勿將水或其他液體泼洒到本產品上。
- 4、請勿將本產品置放于靠近熱源的地方。除非有正常的通風，否則不可放在密閉位置中。
- 5、請不要嘗試自行維修本產品，應由授權的專業人士進行此項工作。

## 安全注意事項

- 1、本產品非玩具，請讓兒童遠離本產品。
- 2、本產品僅限室內使用，請勿在潮濕環境或室外使用。
- 3、注意防潮，請勿將水或其他液體潑灑在本產品上。
- 4、請勿將本產品置放于靠近熱源的地方。除非有正常的通風，否則不可放在密閉位置中。
- 5、請不要嘗試自行維修本產品，應由授權的專業人士進行此項工作。